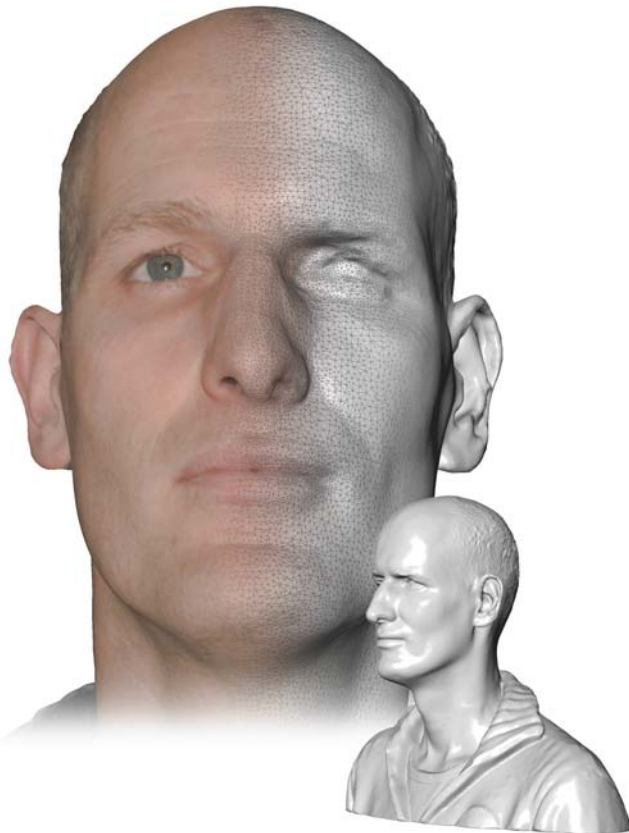


The viSense2 is an optical scanning device specially designed for the digitization of faces in high detail. In only 0.25 seconds the viSense2 captures both the geometry and a picture of the face.

viSense2 Face Scanning in 3D and Color

The viSense scanner is a real multifunctional talent with its integrated color camera, the very short scanning time and the powerful QTSculptor software in the background. This combination allows for the production of high quality 3D models in high speed.

The combination of several single scans is very easy in QTSculptor. This makes it possible to scan even very complex, static geometries with a single scanner.



The eye-safety of the viSense2 is proved after DIN EN 60825-9 and DIN EN 62417 (group 1 - minor risk).

The combined information is computed into a high-class, photo-realistic 3D model, which then can be exported as a textured triangular mesh. The viSense2 shows its full potential when linked to a viSense2 cluster.



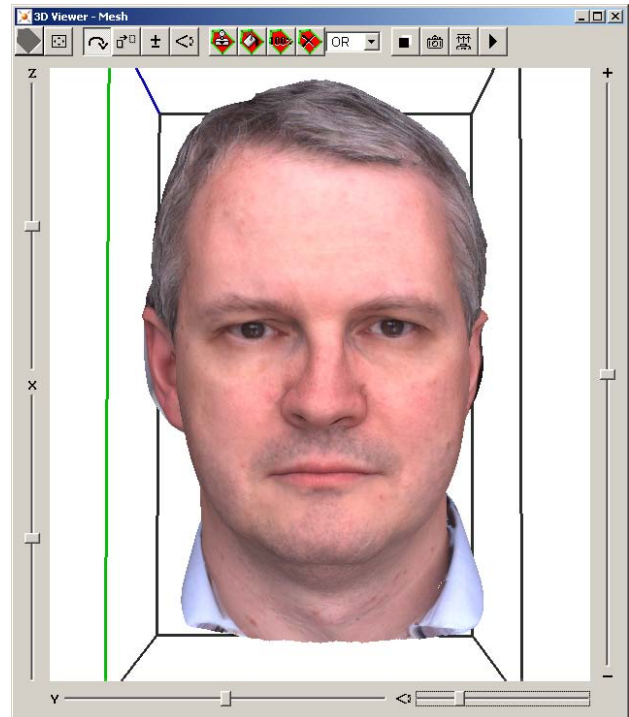
The viSense2 can be used as a stand-alone scanner, as well as linked to a multi scanner cluster. Because of the hardware based synchronization of all viSense2 systems, there is no time gap in-between the scans. All single shots fit perfectly as artefacts, due to moving of the scanned person, can be avoided. The viSense2 multi scanner stands for consistent data in all scans, which is the guaranty for an excellent result.



The setup of a multi viSense2 cluster is a simple task. With just a few mouseclicks the relative position of all scanners is calibrated. Subsequently all single scans will automatically be registered to a common coordinate system. Thereby the viSense2 can also be used in the mobile application on a regular photo tripod.



Photo flashlights can be connected to the viSense2 and grant for homogenous lightning conditions. The flash for the color image is triggered by all viSense devices simultaneously. Shadowing effects are minimized which enhances the photorealistic result. White balance can be used to reduce the effects of changes in the color temperature of the surrounding light.



The face scanner viSense2 can be used at a stationary PC, as well as on a Laptop. The connection is established with a single Gigabit Ethernet cable.



Resolution 3D [Pixel]:	656x494
Resolution 2D / Color [Pixel]:	1392x1040
Minimum Scanning Distance [mm]:	600
Maximum Scanning Distance [mm]:	950
Recommended Scanning Distance[mm]:	700
Measuring Area [mm]¹⁾:	350x260
Scanning Time [s]:	0.25
Dimensions [mm]:	250x130x320

¹⁾ at recommended scanning distance of 700mm

Contact:
 Polygon Technology GmbH
 Rundeturmstraße 12
 D-64283 Darmstadt (Germany)

Phone: +49 (6151) 155-482
 Fax: +49 (6151) 155-479
 Email: info@polygon-technology.de
 URL: www.polygon-technology.com

